

HPE Super 6—Unlock Data with AI

Data challenges

Data is **everywhere**, and ever increasing in **quantity** and **complexity**—resulting in a major difference between data, information, and achieving actionable insights.

As a result, many organizations:

- Lose sight of what to do with all this data.
- Feel unsure as to whether they’re fully leveraging data that can drive a competitive advantage.



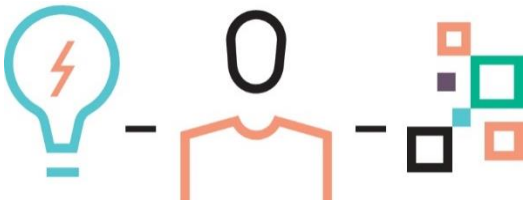
Why should I care about AI?

This data dilemma is making **artificial intelligence (AI)**, **big data**, and **advanced analytics** the heart of enterprise digital transformation.

Top three initiatives reported by business leaders.¹



However, most organizations are not prepared for the next wave of digital transformation.

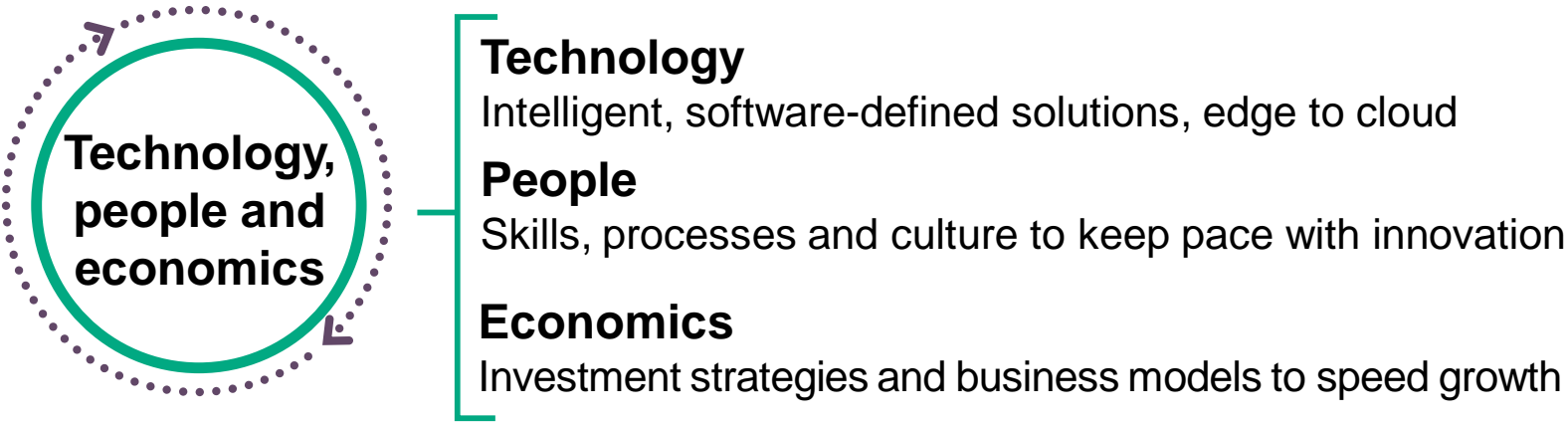


60 percent reporting they have **no formal strategy in place**.²

^{1,2} Voice of the Enterprise – Digital Pulse survey, 451 Research, 2018.

How HPE accelerates data transformation

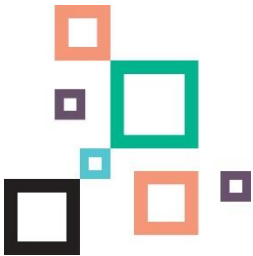
HPE understands that AI, data, and analytics initiatives are on a continuum that’s driven by business needs and goals.



Applications and use cases

AI makes it possible for machines to learn from data, adjust to new inputs, and perform human-like tasks.

Businesses can use the power of AI to work with applications and use cases such as:



Smart cities

Financial trading

Smart cars

Data security

Fraud detection

Prescriptive maintenance

Voice and facial recognition

Healthcare/predictive diagnosis

Chatbots and virtual assistants

Marketing personalization and recommendations

Key challenges in exploring and adopting AI



- CIOs **face two key challenges** in exploring and adopting AI:
- Availability of skilled and experienced staff.
 - Lack of understanding of AI potential for IT and business.



- What opportunities does AI bring to the business? What are the major use cases?
- How to get started gaining intelligence from data?
- What is the best way to prepare the company culture for a data-centric and AI future?
- How do you integrate an AI and data ecosystem for advanced analytics?

Wherever you are on your AI journey, HPE can help

HPE believes each organization has a **unique path** toward building a data foundation, developing advanced analytics solutions, and experimenting with AI for select use cases.



- 1 Start exploring with HPE Pointnext workshops and training— Understand AI, data, analytics outcomes and challenges.
- 2 Experiment by identifying the data sources that will be required for the use case, deliver a proof-of-value, test and validate.
- 3 Modernize data, compute, storage platforms; manage and consume data and analytics with HPE GreenLake flexible consumption models.

Learn more



Hewlett Packard
Enterprise

HPE internal
Super 6
Unlock Data with AI

HPE partners
Super 6
Unlock Data with AI